

# The Gravel Laker

Volume XXIV Number 1

[www.gravellake.org](http://www.gravellake.org)

Summer, 2012



## In This Issue

- President's Corner
- 2012 Calendar
- Steve's Poetry
- Info on MLSA
- All about Beavers!
- Mango Salsa recipe
- GL word search and crossword
- Treasurer's Report
- New SIBZ



## President's Corner

I have both a little news and a little gossip to report. The news to report is that, although our weed treatment program continues to be successful in controlling invasive species, we will be looking into whether controlling some of the late season emergents (native weeds) is appropriate. Additionally, the board will continue to seek a better solution for the flooding on the swamp road that provides access for Streeter and Chamberlin Drives.

The gossip I've heard is threefold. While attending a Porter Township board meeting in April, I heard that Cedar Lake, Hemlock Lake, and possibly other lakes on the way to Marcellus are considering connection to the Lakes Area Sewer Authority (LASA). Our sewer system has ample capacity for these lakes and the additional fees could help keep our monthly rates static for years to come. I've also been told that there are beavers on and around Gravel Lake—I've heard this can be both good and bad. Let us know what you think (and see). Also, take a look at the wildlife segment in this issue of the Gravel Laker to learn about these animals.

Finally, fishermen are catching walleye! (...or at least they say they are!) You keep catchin' 'em and we'll keep stockin' 'em.

If you have feedback on these topics or others, please email me at [cucad4@hotmail.com](mailto:cucad4@hotmail.com).

Craig DeSimone  
GLA President

## Gravel Lake Association 2012 Calendar

### BOARD/MEMBERSHIP MEETINGS:

- **Saturday, June 9th at 10am – Membership Meeting**
  - Location – Raab's pole barn on Gebhard Beach
  - Trustee elections
  - Dues collection
  - 50-50 raffle
  - Buy Gravel Lake paraphernalia – shirts, coozies, towels, etc.
- **Saturday, July 14th Board of Trustees meeting at 10am (Porter Township Hall)**
- **Saturday, August 11th at 10am – Membership Meeting**
  - Location – Raab's pole barn on Gebhard Beach
  - Trustee elections
  - 50-50 raffle
  - Buy Gravel Lake paraphernalia
- **Saturday, September 8th Board of Trustees meeting at 10am (Porter Township Hall)**

### FOURTH OF JULY ACTIVITIES: **Saturday, June 30th – Sunday, July 1st**

- **Fun Run – Saturday, June 30th at 10AM – Willow Beach Resort**
  - \$4 per person
  - All ages
  - Prizes and refreshments
- **Kids' Games – TENTATIVE Saturday, June 30th at 12PM – Willow Beach Resort**

Look on the website and for signs regarding Kids' Games as we get closer to the event.

  - Ages 1-12
  - Prizes for all participants
- **Paddle Boat Regatta – Saturday, June 30th at 6PM**
  - Location - Channel
  - Register at 5:45PM at the Public Access

**All participants MUST have certified flotation devices**

  - Divisions
    - 1-person kayak
    - 2-person kayak
    - Youth paddle boat (both racers under 12)
    - Adult paddle boat
- **Boat Parade – Sunday, July 1st at 3PM - Theme: Circus!**

**Register via email with Carlie Stogis by Friday, June 29th**

  - cstogis@gmail.com
  - Include FAMILY NAME, THEME (description of boat), BEACH

- Prizes!

### FUNDRAISERS:

- **Gravel Lake Social**
  - (Date not set, but most likely will be in early August. Check for signs and on the Gravel Lake website in late July for the official date.)

*A GL Summer  
It's almost summer  
Sunshine, swimming, and good times  
We love Gravel Lake.*

*Unravel  
There once was a lake called Gravel,  
A place worth the travel.  
Swimming in the sun,  
Friends & fun,  
And the best place to unravel!*

*Oh Summer, you are the best  
Oh summer you are the best  
Better than winter and all the rest  
When I ski I wear a vest  
Oh look! A bird on the cottage made a nest.*

Submitted by Steve Paramski, Huff's Landing

If you'd like to see your poetry or pictures in the next issue of the Gravel Laker, email Jamie Paramski at [jparamski@gmail.com](mailto:jparamski@gmail.com).

## Michigan Lakes and Streams Association

Do you love Gravel Lake? Want to make sure it remains the idyllic place you enjoy? Meet the Michigan Lakes and Streams Association (MLSA), an organization created to protect Michigan lakes and the interest of Michigan riparians. This is a group that works to help our lakes last and to encourage everyone's enjoyment of their lakefront property.

MLSA is the organization that brings us information on just about any lake topic we might be faced with. Our own Gravel Lake Association has received help with weed management and sewer options in the past. Gravel Lake resident, Sheri Kurtyak, volunteers with the Cooperative Lakes Monitoring Program that MLSA puts together in an effort to track the health of Michigan lakes. GLA also subscribes to an important magazine called, *The Michigan Riparian* which is the quarterly publication associated with MLSA. This magazine has recently published articles about lake management throughout Michigan and the new road end bill that has been put into effect for this season. MLSA is also affiliated with Michigan Waterfront Alliance that works in Lansing to lobby for the protection of your riparian rights.

The Michigan Lakes and Streams Association also provides many opportunities for education. Gravel Lake Association president, Craig DeSimone, goes to the semiannual regional meeting in Decatur to keep up-to-date on news and issues from other Michigan lake associations. MLSA has a fall regional conference, also attended by our president, which has featured topics such as lakescaping, invasive species, and aquatic plants. They also hold a two day spring conference at Boyne Mountain to discuss topics like inland lake management, riparian rights review, lake friendly zoning ordinances, and many more.

If you wish you could do more for your lake and want to keep up with new, important legal developments, you should join MLSA, or, you should at least check out one of their two publications: *Buying and Selling Waterfront Property in Michigan* or *Michigan Lake Associations: The Nuts and Bolts*, both by Clifford H. Bloom (attorney for MLSA). Membership in MLSA is only \$35 a year and that includes a subscription to *The Michigan Riparian* magazine.

For more information about Michigan Lakes and Streams and to become a member: [www.mymlsa.org](http://www.mymlsa.org)

To learn more about *The Michigan Riparian* or to subscribe to the magazine: [www.mi-riparian.org](http://www.mi-riparian.org)

Information about Michigan Waterfront Alliance can be found at: [www.MWAI.org](http://www.MWAI.org)

**-Melissa Dunigan, Contributing writer**



**MICHIGAN LAKE AND STREAM ASSOCIATIONS, INC.**  
300 N State Street, Suite A Stanton, MI 48888 Phone: 989.831.5100

Email: [info@mlswa.org](mailto:info@mlswa.org) Website: [www.mymlsa.org](http://www.mymlsa.org) [www.micorps.net](http://www.micorps.net)



**Individual 2012 Annual Membership dues are \$35 and include a 1 year's subscription to The Michigan Riparian magazine**

☐ New Member ☐ Renewal

PLEASE PRINT

Name \_\_\_\_\_ Date \_\_\_\_\_

Address \_\_\_\_\_

City \_\_\_\_\_ State \_\_\_\_\_ Zip \_\_\_\_\_

Phone (\_\_\_\_) \_\_\_\_\_ Email \_\_\_\_\_

☐ MASTERCARD ☐ VISA ☐ DISCOVER Amt. \$ \_\_\_\_\_

Credit Card # \_\_\_\_\_ / \_\_\_\_\_ / \_\_\_\_\_ / \_\_\_\_\_ V Code \_\_\_\_\_ Exp. \_\_\_\_\_

Signature as it appears on credit card \_\_\_\_\_

**Make checks payable to ML&SA**  
**Mail application and \$35.00 check to:**  
**Michigan Lake and Stream Associations**  
**300 N. State Street, Suite A**  
**Stanton, MI 48888**

*Would you like to donate to Michigan Lake and Stream Associations to help us in our efforts to protect and preserve Michigan's inland lakes and waterways? Donation \$ \_\_\_\_\_*

**Michigan Lake and Stream Associations, Inc. is a qualified 501(c)(3) non-profit organization.**  
**Please consider making an additional donation which will be deductible on your itemized federal income tax returns.**

For Office Use

Dues \$ \_\_\_\_\_ Check No. \_\_\_\_\_ Donation \$ \_\_\_\_\_ Donation Check No. \_\_\_\_\_

Credit Card Amt. \$ \_\_\_\_\_ Date Rec'd. \_\_\_\_\_ Rec'd. by \_\_\_\_\_

www12

## Farewell to Gravel Lake Friends

### George H. Ehemann

George H. Ehemann passed away on March 6, 2012, surrounded by family. George is survived by his wife, Louise H. Ehemann. George and Louise bought their home on Huff's Landing in 1979. They came to Gravel Lake with their four children from Twin Lakes in Dowagiac at the recommendation of their good friends, Bill and Pat Metz (Winkler Beach) who had just discovered and bought a home on this incredible lake. Those who were lucky enough to know George would tell you he was a genuine, loving person, and he always had a new joke to tell. He was an amazing father and grandfather. Summer memories would not be complete without his presence. He enjoyed sitting on the front patio, watching his grandchildren play on the beach and observing the boats go by. He could be seen at the young age of 65 waterskiing behind the family boat, a peach-colored Century speed boat. He taught countless people how to waterski over the years, and he was always willing to go "just one more lap."



My family and I would like to say thank you to all of the support from our Gravel Lake friends.

Jamie Paramski

### Lillian McGreal (Wallace)

My mom, Lillian, passed away on December 6, 2011. She is survived by my dad, Jim (Jr.), 4 children and 4 grandchildren. Her mom and dad, my grandfather and grandmother, started coming to Gravel Lake in the 1930's. They would rent cottages at Dugan's Landing during those early years and eventually purchase a cottage on Sandy Beach when that area was developed after WW II.

Mom had many stories of those early days at the lake with family and friends. She would remember great hayride parties with Freddy Winkler and trips to Decatur to see ventriloquist Edgar Bergen & Charlie McCarthy.

Her legacy continues with us who enjoy the lake she loved so much.

Jim McGreal

*We were lucky enough to get her reminiscences filmed and are part of the Gravel Lake video archives on our website.*



Lillian at Gravel Lake - 1942

## The Gravel Lake Beaver



Many of us saw it swimming in the lake or crossing the swamp road and couldn't believe our eyes. "It's a muskrat!" we said, "Or maybe it's a big squirrel. No wait, it's a...beaver?" Yes, that is a beaver roaming around, and swimming in Gravel Lake. In the past few years, the beaver population in Southwestern Michigan has dramatically increased, and we have begun to see beavers where there never were before. Depending on how you look at it, this could be a good thing or a bad thing for the beaver's new found home on the "swamp road" of Gravel Lake.

Beavers are attracted to running water in shallow valleys, and are famous for building dams which stop the flow of the water, creating their ideal habitat. These flat-tailed, furry mammals use tree branches, sticks and mud to create a dam at the shallowest part of a stream or river. This creates a pond-like environment or wetland that becomes a rich habitat for fish, ducks, frogs, birds, turtles and other small wetland creatures. The pruning, or chewing, that beavers do allows trees and bushes to come back twice as leafy and hearty the next season. Beavers peel sticks and branches off trees to create a teepee near the shore of their dam in which they will live and raise their young.

Beavers are an interesting social creature. Usually around the third year of life, they leave home and choose mates that they stay with for life. Both male and female beavers care for their young, or kits, together. Generally, a female beaver will give birth to 1-8 kits in the spring. Each beaver couple may have several litters throughout their lifetime and once the second litter comes along, the older siblings help to rear the young.

Beavers are vegetarians and eat green bark, water lily tubers, leaves and tree branches. During the cold winter months beavers swim to the bottom of their dam and choose branches and food from their ready supply to munch on. Their large upper and lower incisors are great for felling trees and chewing up a meal but they do get worn down with all of that grinding. This is not problematic, however, because beavers' teeth never stop growing their entire lives! With all of that hearty eating, a beaver can reach up to 40 lbs. in weight.

Ever wonder what's up with that large, flat, heavy tail? It actually has several uses. The beavers' tail helps it steer its large wet body through the water. A beaver will also slap it's tail on the water to create a warning noise for it's beaver family in the event of danger. Another use for that tail is as a balancing aid on land when the beaver is carrying damming materials and foraging along the shoreline.



## The Gravel Lake Beaver (continued)

The dammed areas that beavers create are some of the most vital and thriving eco-systems in the world, those that rival tropical rainforests. However the damming can also become a burden, especially when it occurs in residential areas. Not only can beavers cut down an entire tree in a matter of hours but their damming can cause flooding over roads or destroy private properties. If a beaver sets its sights on one of your trees or bushes, there are ways to prevent damage to your property other than the radical extermination some people turn to. Simply encase the bottom 1 foot to 2 feet of the tree in a wire cylinder or wire fencing. This quick and easy technique is all it takes to keep the beaver's teeth away from your vegetation! Even though beavers have some wild enemies, including bears, cougars, or bobcats, humans remain their greatest foe.

**Tricia Barker, Contributing writer**

Sources:


[http://www.beaversolutions.com/tree\\_protection.asp](http://www.beaversolutions.com/tree_protection.asp)

[http://www.landscouncil.org/beaversolution/facts\\_on\\_beavers.asp](http://www.landscouncil.org/beaversolution/facts_on_beavers.asp)

<http://www.beaversww.org/beavers-and-wetlands/about-beavers/>

[http://www.mlive.com/news/kalamazoo/index.ssf/2010/03/increase\\_in\\_beaver\\_population.html](http://www.mlive.com/news/kalamazoo/index.ssf/2010/03/increase_in_beaver_population.html)

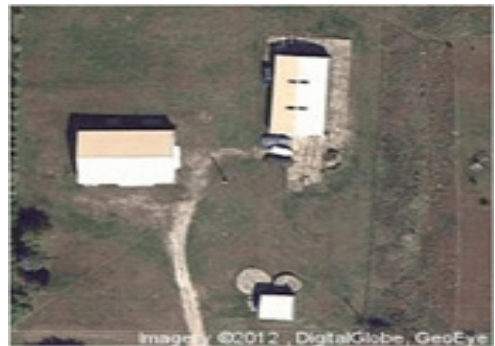
# Two Witches and a Broom



**RESIDENTIAL & BUSINESS  
CLEANING SERVICE**

Larinda Rockafellow  
269-357-3491

Cindy Mroczek  
269-838-5504



**Storage Barns For Sale**  
29582 94TH AVE, Marcellus, MI  
**269-720-3682**

Income property for sale: Store Boats, cars, and trailers. Pay for your property with very little effort. New Roofs.



## Mango Cilantro Salsa



(recipe courtesy of Bobby Flay via FoodNetwork.com)

This is a very versatile recipe that you can alter to your tastes. Goes well with chips, or spread over grilled chicken.

### Ingredients:

- 2 mangoes, peeled and diced
- 1/4 cup finely chopped red onion
- 1 medium jalapeño, seeded and diced  
(add the seeds for a spicier salsa)
- 2 Tbsp chopped cilantro
- 3 Tbsp lime juice
- 3 Tbsp fresh orange juice
- Salt and freshly ground pepper to taste

### Directions:

Combine the mangoes, onion, jalapeño, cilantro, lime juice, and orange juice in a bowl and gently mix. Season to taste with salt and pepper. Let sit in the refrigerator covered in plastic wrap for 30 minutes to allow flavors to blend. Serve chilled.

**HIGH'S MARINE** **423-7065**  
Since 1954

**Your One-Stop Boating Shop!** 

**Sales**  
New & Used

Lund Fishing Boats Bennington Pontoons  
Bryant Runabouts Caravelle Powerboats  
Future Beach Recreational Products

**Service**  
**Turn-key Service!**

Full Service Department, Oil & Filter Change,  
Tune Up, Winterize, Storage, Shrink-wrapping,  
Pickup & Delivery

**Storage**

**Parts & Acces.**

Skis, Tubes, Kneeboards, Ropes, Vests, Fishing  
Rods & Gear, Fishfinders, Electronics, Parts,  
Accessories, and that's just the beginning...

**1-877-99-BOATS**  
**www.highsmarine.com**  
Shop our online store - View our entire boat inventory



ESTABLISHED 1950  
**Floyd & Tom Jerdon**  
BROKERS  
Lake Property Specialists

**269-782-4000**  
32502 M-62 WEST - Dowagiac, MI 49047  
Visit our WEBSITE!  
[www.jerdon.net](http://www.jerdon.net)

# O'Donnell's ocks LLC

Scan with your  
smart phone



*Southwest Michigan's Premier Dock & Lift Headquarters*



Sales and service of  
all major docks,  
boatlifts and water  
front accessories

Serving Gravel-  
Lake for over  
20 years



12097 M-60 • Jones, MI •

269.244.1446

e-mail: [info@odonnellsdocks.com](mailto:info@odonnellsdocks.com)

*For an on-line quote, go to:*

Only 20 money-saving  
minutes away

## [www.odonnellsdocks.com](http://www.odonnellsdocks.com)

Authorized dealer for



**Roll-n-Go**



**WeedRoller**



**HEWITT**



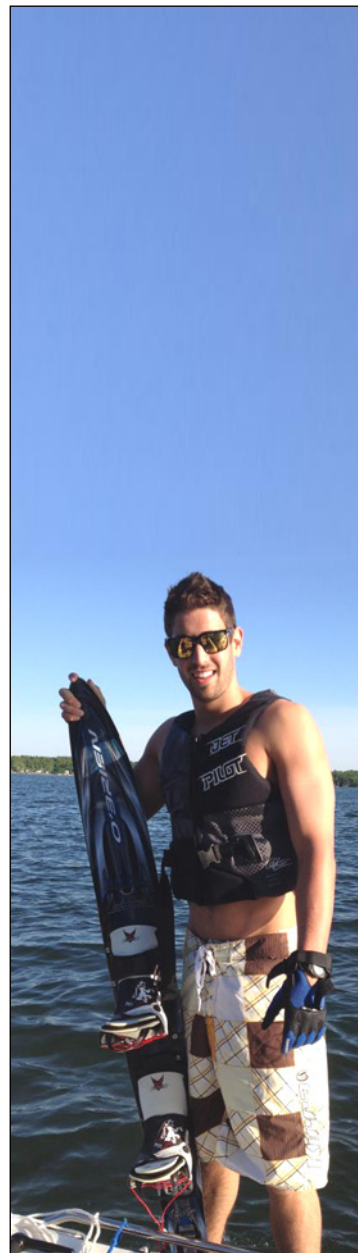
**ShoreStation**

## Gravel Lake Fourth of July Word Find

x r b f z r k v m l n y j d q c o  
 u s b o a t p a r a d e u l b n i  
 n d k u t s x e y d s z k a s v k  
 a r g r a v e l l a k e t i h w v  
 y z c t o q l m y b k t l s w d o  
 k j z h b w z g a v a h d c m g a  
 i f v o e u e n e g o n j i n m l  
 a w f f l d e r e l s e u d e u t  
 z w g j d r f r i e n d s r o b j  
 a g c u d f o d z f l c i u n i w  
 x i f l a a a i d r a c c k a u s  
 o n i y p y r q c n a m l q c g f  
 z h n i s p k d d n j e i y u p d  
 c c g s o v j o d y h l i l q h j  
 x f x p a k u y v c e x o z y x t  
 z e g j k d r c n d s d g w g r m  
 t b e n h r u k s n f p x b s z j

America  
 blue  
 boat parade  
 candy  
 canoe  
 children  
 family  
 fireworks  
 Fourth of July  
 friends  
 fun

fun run  
 Gravel Lake  
 holiday  
 kayak  
 Kids Games  
 paddle boat  
 prizes  
 red  
 Regatta  
 Uncle Sam  
 white



# WakeSide Marine



CROWNLINE

RONIX  
*hyperlite*  
LIQUID FORCE  
SURFTECH  
**NAUTIQUE**

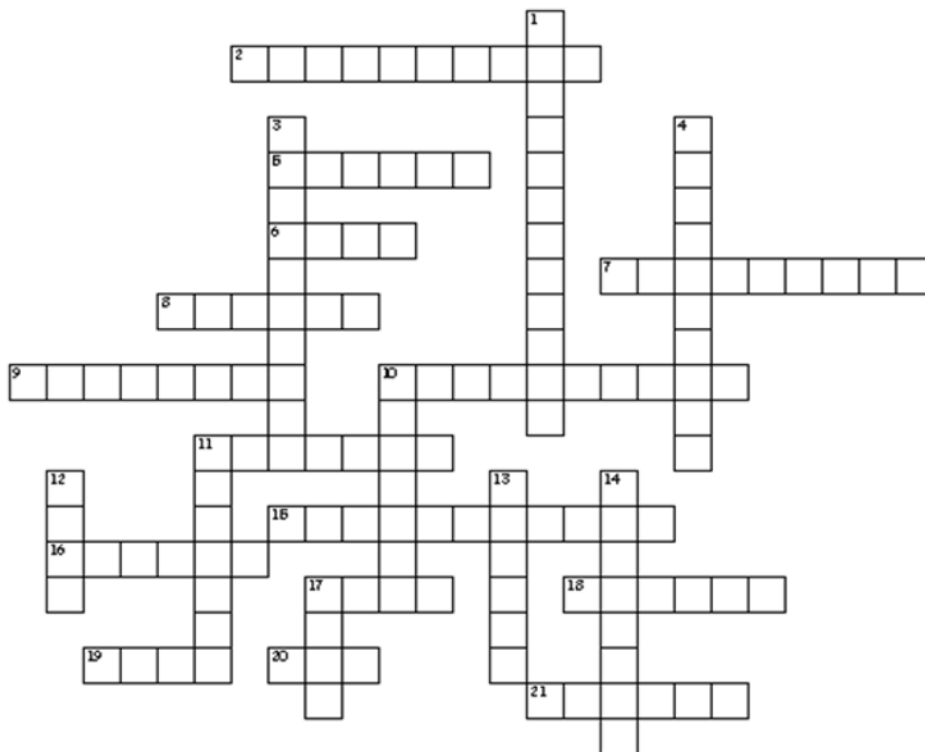


WakeSide Marine  
51305 S.R. 19 North  
Elkhart, IN 46514  
574-264-2874  
wakesidemarine.com





## The Gravel Lake Crossword



### ACROSS:

2. delicious summertime melon
5. third month of the summer
6. "Our lake friends are our \_\_\_\_ friends."
7. first official day of summer: June \_\_\_\_
8. a Bells brewery summertime favorite
9. the "Champagne of Beers"
10. foot-powered vessel
11. activity with a pole, bait, line and lots of patience
15. holiday that kicks off summer
16. the season Gravel Lakers look forward to from fall through spring
17. the first month of the summer
18. the Gravel Lake party in August where lakers of all ages are invited
19. "Come to the membership meeting and pay your \_\_\_\_"
20. acronym for the Gravel Lake Association
21. skiing with one ski

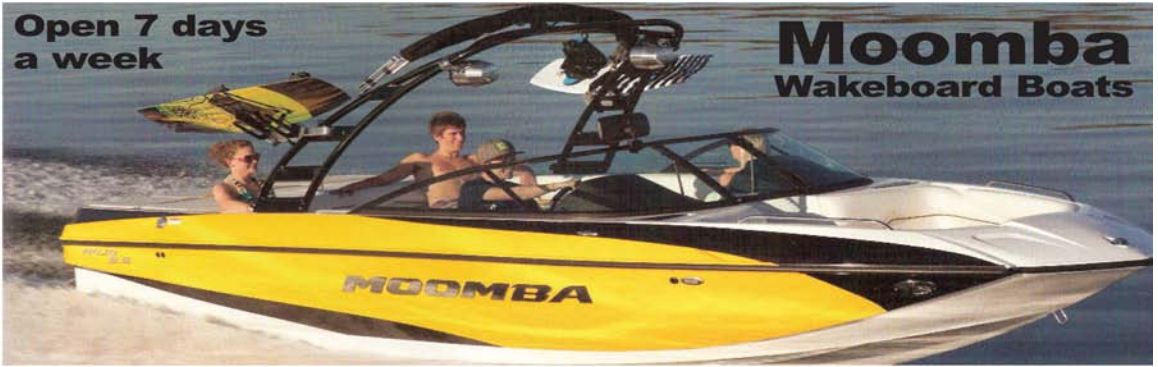
### DOWN:

1. America's birthday
3. summertime grilling favorites
4. the happiest place on Earth
10. the boat that goes slow
11. non-kin people you hang out with at the GL
12. you must have one of these on the boat for each person
13. kin
14. the first-Monday-in-September holiday
17. seventh month

Answers available on p. 20.

**Open 7 days  
a week**

**Moomba**  
Wakeboard Boats

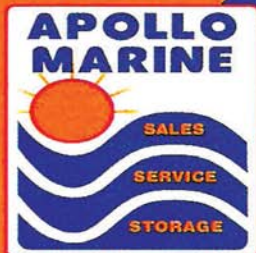


**Sales  
Service  
Storage**



Windjammer Funship 24' Elite

2012  
*Avalon*  
LUXURY PONTOON BOATS



**SOUTHSIDE OF GRAVEL LAKE**

**15355 96TH AVE**

**Lawton, Michigan 49065**

**269.423-6011**

**1-888-996-BOAT**

**RAUAPOLLO@AOL.COM**

**WWW.APOLLOMARINE.NET**

# **ENVIROCLEAN**

## **Tile and Grout Cleaning Service, LLC**

More than just tile and grout cleaning, **ENVIROCLEAN** can help you maintain your investment in your home through a deep cleaning process like no other.

We can clean your tile, brick, natural stone, concrete and even carpet with our special equipment that can clean with up to 3000 psi and 240 degrees of heat for not only a deep cleaning but sanitizing treatment all with biodegradable products!

### **Areas of your home or business that we can restore**

- Tile and Grout in kitchens, bathrooms, hallways
- Brick Fireplaces, Patios, Sidewalks
- Concrete Driveways, Patios, Sidewalks, Steps
- Natural Stone
- Carpet Cleaning and More!

So if you need the soot removed from the exterior of your fireplace, your concrete cleaned and sealed for Winter or your carpets cleaned after the Summer traffic your home has received, call **ENVIROCLEAN** today for a **FREE** estimate!



**269-655-4110**

**Locally Owned by Miles Cunat**



## Treasurer's Report

**Beginning Balance as of 1/1/11    \$16,863.73**

### Deposits

Koozie, Towels and Tee-Shirt Sales	\$396.00
2011 Membership Dues - 19	\$501.00
2011 Membership Dues - 10	\$665.00
2011 Membership Dues - 4	\$171.00
2011 Membership Dues - 2	
& 1 Beach Towel	\$95.00
2011 Membership Dues - 4	\$148.00
2011 Membership Dues - 20	\$1,258.00
2011 Membership Dues - 16	\$630.00
2011 Membership Dues - 22	\$914.00
2011 Membership Dues - 9	\$516.00
2011 Membership Dues - 22	
2 for 2010 Dues	\$1,008.00
2011 Membership Dues - 6	\$276.00
Advertising	\$50.00
Split the Pot Proceeds	\$65.00
2011 Membership Dues	\$546.00
2011 Membership Dues	\$527.00
2011 Membership Dues	\$853.00
Apparel Sales	\$670.00
Advertising	\$25.00
Bowling Outing	\$170.00
Apparel Sales	\$844.00
2011 Membership Dues	\$268.00
Apparel Sales	\$90.00
Apparel Sales	\$464.00
2011 Membership Dues	\$35.00
2011 Membership Dues	\$188.00
Split the Pot - August Meeting	\$31.00
2011 Membership Dues	\$113.00
Additional Donation	\$20.00
Apparel Sales & 4 Social Tickets	\$359.00
Gravel Lake Social	\$2,490.00
Gravel Lake Social	\$1,015.00



## Treasurer's Paid Listing Report (continued)

### Deposits (continued)

Petty Cash for Social	\$100.00
2011 Membership Dues	\$70.00
2011 Membership Dues	\$245.00
Apparel Sales & 1 Dues	\$780.00
Gravel Lake Social	\$101.00
2011 Membership Dues - 2	\$80.00
Deposit & adjustment	\$250.70
<b>Total Deposits</b>	<b>\$17,027.70</b>

### Expenses

The Michigan Riparian	\$352.00
Michigan Waterfront Alliance	\$100.00
Superior Imaging -	
Gravel Lakers (print & mail)	\$622.88
Michigan Lakes and	
Stream Membership Dues	\$175.00
United States Post Office -	
Stamps for Invoices	\$183.20
Staples - Copies of Inv.	
Treatment Notices, Envelopes	\$118.08
Janice Pinkos- Reimbursement	
for Return Address Labels	\$13.36
South Michigan Insurance -	
Surety Bond Renewal	\$100.00
Postmaster - PO Box Rental	\$26.00
Craig DeSimone -	
Reimbursement for Mic Stand	\$21.19
Superior Imaging -	
Gravel Lakers (printing only)	\$347.18
Crown Trophy - July 4th Boat Race	\$87.93
Rumpel Shirt Skin -	
Gravel Lake Apparel	\$2,461.60



## Treasurer's Paid Listing Report (continued)

### Expenses (continued)

Lauren Michelli -	
Reimbursement for	
July 4th Kids Games	\$144.92
Dan McDevitt -	
Reimbursement for Bouy maintenance	\$115.80
Suzanne Reed -	
Reimbursement -	
Office Max, Signs, Stamps	\$72.09
Newell Agency Inc. -	
Directory & Offices Insurance	\$924.25
Auto Owners Insurance -	
Liability Insurance	\$223.00
Craig DeSimone -	
Prepaid Kinko's Card & other copies	\$79.77
Janice Pinkos-	
Reimbursement Meeting Refreshments	\$45.64
Petty Cash for Social	\$100.00
Drop Anchor - Gravel Lake Social	\$855.00
Logan Smith -	
DJ for Gravel Lake Social	\$300.00
Rumpel Shirt Skin -	
Gravel Lake Apparel	\$554.24
Carlie Stogis - Reimbursement	\$34.06
Superior Imaging - Fall Gravel Laker	\$446.08
Jennifer Kitzmiller -	
Reimbursement for	
Boater Safety Cards	\$103.71
Suzanne Reed -	
Reimbursement Kids Games at Social	\$62.50
Laggis Fish Farm - Deposit	\$1,100.00
Laggis Fish Farm -	
Fish Stocking Balance	\$1,070.00
Auto Owners Insurance -	
Liability Insurance	\$41.00
<b>Total Expenses</b>	<b>\$10,880.48</b>



## Treasurer's Paid Listing Report (continued)

<b>Checkbook Balance as of 12/31/11</b>	<b>\$23,010.95</b>
<b>Other Assets:</b>	
Certificate of Deposit - Maturity Date 2/12/12	\$5,197.18
Certificate of Deposit - Maturity Date 2/12/12	\$5,197.18
Certificate of Deposit - Maturity Date 6/12/12	\$5,252.41
<b>Total Other Assets</b>	<b>\$15,646.77</b>
<b>Total Funds</b>	<b>\$38,657.72</b>



# EDENS EXPRESS

M E S S E N G E R   S E R V I C E S

## 773-235-5550



1422 W. Willow, Suite #102 - Chicago, IL 60642 - [www.edensexpress.com](http://www.edensexpress.com)

## Answers to Gravel Lake crossword (from p. 13)

### ACROSS:

- 2. watermelon
- 5. August
- 6. best
- 7. twentieth
- 8. Oberon
- 9. High Life
- 10. paddleboat
- 11. fishing
- 15. Memorial Day
- 16. summer
- 17. June
- 18. social
- 19. dues
- 20. gla
- 21. slalom

### DOWN:

- 1. Fourth of July
- 3. hamburgers
- 4. Gravel Lake
- 10. pontoon
- 11. friends
- 12. vest
- 13. family
- 14. Labor Day
- 17. July



### GRAVEL LAKE MERCHANDISE

T-shirts, hats, and towels for sale.

T-shirts: \$15 (\$12 for kids)

Hats: \$10

Towels: \$25

Limited sizes and colors available.

Contact Suzanne Reed at 269-808-0327 or  
Carlie Stogis 630-461-6200 to purchase items



## NEWSLETTER STAFF

Jamie Paramski, Editor  
jparamski@gmail.com

John Boroughf, Ads

Jim McGreal, Design  
jim@jmcstudios.com

Spencer McGreal, Production/Graphics  
spencer@jmcstudios.com

Melissa Dunigan, Contributing writer  
Marc Mascarello, Contributing writer  
Tricia Barker, Contributing writer

Chip Van Schoyck, Printer

Chip's Ad



**Our unique electric powered boats can be found all over the world from resorts and hotels to private lake homes**

*Kids love to do battle in our 2-seater water-squirting Electric Fun Boats*

*Teens and couples love to relax and cruise the lake on our Electric Chaise Lounger*

*Other folks can't get enough of our Touring 130 Electric Kayak with comfortable seats and running lights*

**We sell out several times a year so Call or Email to Reserve Yours Today !**

**(708) 516-6183 • info@kayacht.com • ElectricBoats.com**

**Kayacht™**

# Gravel Lake Association

## Membership Form: January 2012 - December 2012

Fill out and mail to:

Gravel Lake Association, P.O. Box 531, Lawton, MI 49065

This document is also available on the website @ [www.gravellake.org](http://www.gravellake.org).

Please print clearly.

Member name(s): \_\_\_\_\_

Beach: \_\_\_\_\_ Lake Phone: \_\_\_\_\_

Gravel Lake Address: \_\_\_\_\_ Lawton, MI 49065

Home Address: \_\_\_\_\_

City: \_\_\_\_\_ State: \_\_\_\_\_ Zip: \_\_\_\_\_

Home Phone: \_\_\_\_\_

E-mail address: \_\_\_\_\_

*Please print clearly. Mail Check or Money Order payable to Gravel Lake Association*

Membership dues for 2012 \$35.00

Optional Riparian magazine \$ 8.00

Additional donation \_\_\_\_\_

Fish Stocking Donation \$10.00 \$15.00 \$25.00 or Other \_\_\_\_\_

Total Enclosed \$ \_\_\_\_\_

Please indicate where your Riparian should be sent (circle one): home lake





## Board of Trustees Contact List

### OFFICERS

<b>President</b>	Craig DeSimone - cucad4@hotmail.com
<b>Vice President</b>	Suzanne Reed
<b>Secretary</b>	Kathy Brooks
<b>Treasurer</b>	Janice Pinkos - fampinkos@aol.com

### OTHER CONTRIBUTORS


<b>Editor, Gravel Laker</b>	Jamie Paramski - jparamski@gmail.com
<b>Fundraising Committee</b>	Carlie Stogis- (chair)
<b>Internet Operations</b>	Jim McGreal - jim@jmcstudios.com
<b>Weed Treatment</b>	Greg Kitzmiller

### TRUSTEES

<b>Chamberlin Beach</b>	Vacant
<b>Dugan's Landing</b>	Kevin LaLone
<b>Gebhard Beach</b>	Carlie Stogis
<b>Huff's Landing</b>	Dan McDevitt
<b>Idle Ease Beach</b>	Jeanette Garrison
<b>Lewis Beach</b>	Ken Hochsprung
<b>Sandy Beach</b>	Tom Flavin Mark Fortney Jennifer Kitzmiller Greg Kitzmiller
<b>Streeter Beach</b>	Debbie Dorsey Donna DeRosa
<b>Willow Beach</b>	Carole DeSimone
<b>Winkler Beach</b>	Paul Galassi Pat Murray
<b>Trustee-at-Large</b>	Dave Brown

## Gravel Lake Association

P.O. Box 531  
Lawton, MI 49065  
[www.gravellake.org](http://www.gravellake.org)



Apply Address Here